

DeskArtes Expert Series 14.0

Network license setup

Client settings



Contents

About this document.....	2
Requirements.....	2
Terminology.....	3
Network license client configuration in 3Data Expert.....	4

About this document

This document explains the client side settings needed to configure the DeskArtes Expert Series programs to use the Reprise License Manager (RLM) floating network license system, instead of the default DeskArtes standalone licenses.

Before changing the client side settings you need to have a license server running in one of the machines in your network.

For the instructions for installing the license server, see the document "[Network license setup: Server installation](#)".

The instructions in this document are written for the DeskArtes Expert Series version 14.0 installation packages, containing Reprise RLM version 12.0 BL2 license server and tools.

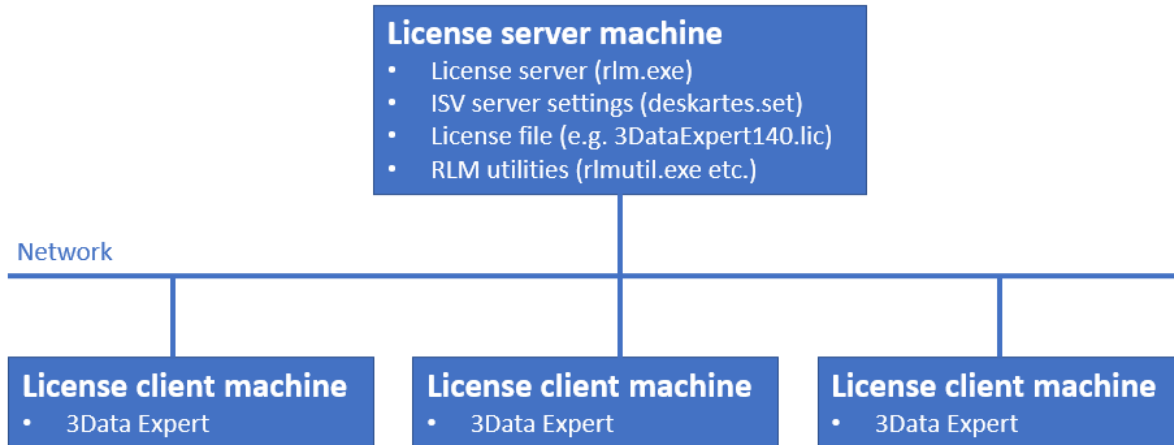
The document is written using the 3Data Expert 14.0 as an example, but the same instructions can be applied also for the other DeskArtes Expert Series programs: 3Data Expert Lite, Dimensions Expert, Sim Expert and View Expert.

Requirements

The machines, running the DeskArtes Expert Series programs with the Reprise RLM network license system, must be connected to the machine running the license server with a network using the TCP/IP protocol.

Terminology

The Reprise RLM network license system, configured for DeskArtes 3Data Expert, consists of the parts illustrated in the following figure.

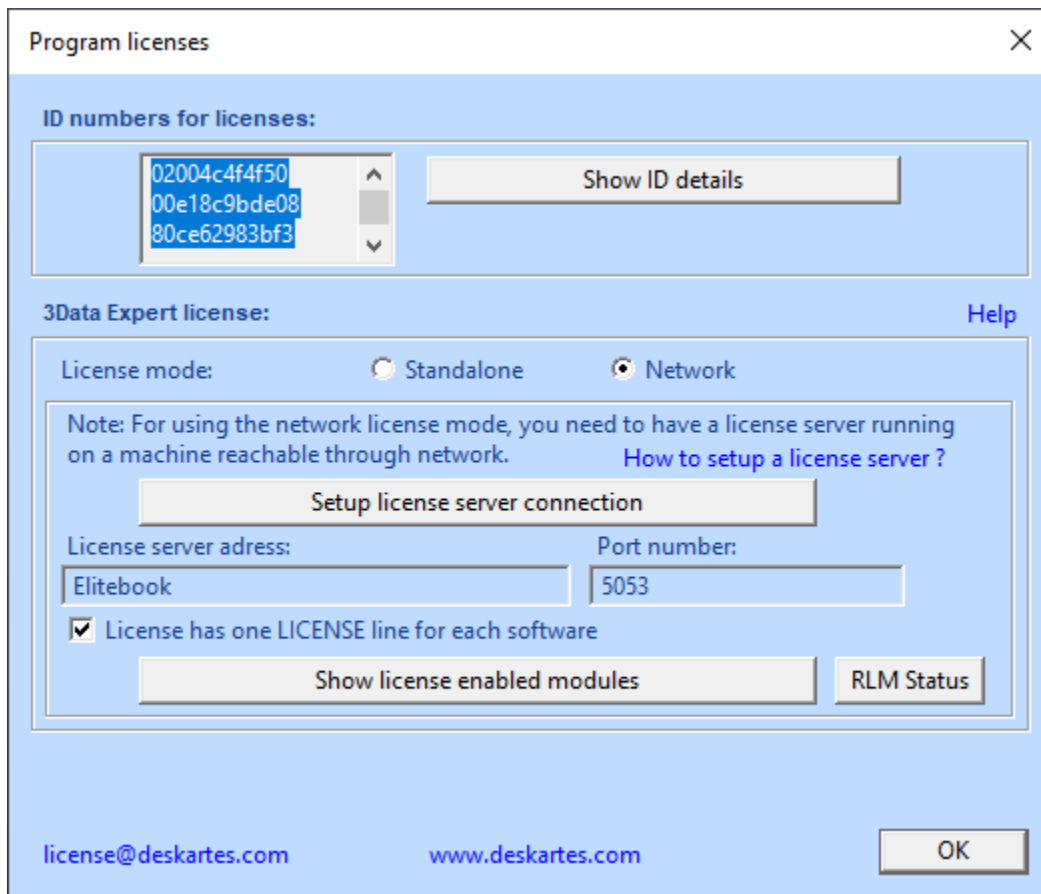


Rectano

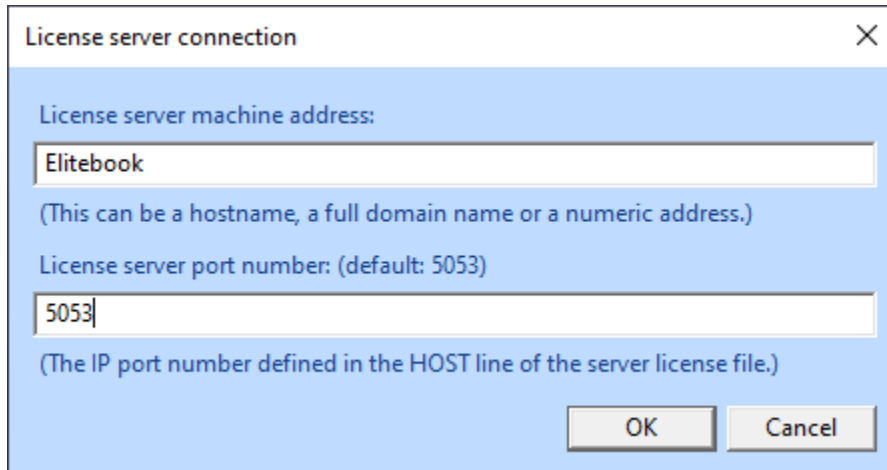
License server machine	The machine where the license server is running.
License client machine	A machine where DeskArtes 3Data Expert is running.
License server program	The program (rlm.exe) controlling the license usage in the network, with help of the ISV server.
ISV server settings file	A platform independent settings file for an ISV server (deskartes.set for DeskArtes programs, like 3Data Expert).
License file	A text file containing the list of available licenses and ISV servers.
RLM utilities	A set of small command line utility programs for handling the license server (rlmutil.exe, rlmhostid.exe, rlmstat.exe, rlmdown.exe, etc.).

Network license client configuration in 3Data Expert

The license system settings can be changed in 3Data Expert by selecting the "Help->Licenses..." menu command.



To set the software to use a network license select the "**Network**" license type and press the "**Setup license server connection**" button.



In the License server connection window fill in the "License server machine address" and "License server port number" fields.

License server machine address is a network address for the machine where the license server program is running. It can be a simple hostname, a full domain name or a numeric address (for example: licserver, licserver.somedomain.com or 192.168.0.105)

License server port number is the IP port number used by the license server to listen license requests from client machines. The port number is defined in the HOST line of the license file. The default port number is 5053.

The correct port number and the hostname can be checked from the HOST line of the license file (**second** and **fourth** field).

```
HOST Elitebook 80ce62983bf3 5053
ISV deskartes deskartes
LICENSE deskartes 3data_expert 14.0 31-dec-2022 1
options=0257d48040000c00 _ck=fdd6819a67 sig="60P04518PK8J0GWQBXSUHW
RA595CJB9XQJXESJR22HBR8WF0Q9TKUARK36BKJXA7QPQ6668VC0"
```

or in the license server startup messages (lines: "**License server started on ...**" and "**Using TCP/IP port ...**").

```

C:\Reprise>.\rlm.exe
11/09 11:14 (rlm) RLM License Server Version 12.0BL2

      Copyright (C) 2006-2015, Reprise Software, Inc. All rights reserved.

11/09 11:14 (rlm) License server started on Elitebook
11/09 11:14 (rlm) Server architecture: x64_w3
11/09 11:14 (rlm) License files:
11/09 11:14 (rlm)      3DataExpert140.lic
11/09 11:14 (rlm)
11/09 11:14 (rlm) Web server starting on port 5054
11/09 11:14 (rlm) Using TCP/IP port 5053
11/09 11:14 (rlm) ... adding UDP/IP port 5053
11/09 11:14 (rlm) Starting ISV server deskartes on port 26232
11/09 11:14 (rlm) New thread created to watch ISV deskartes

```

When correct information has been filled in, press "OK" in "License server connection" window.

In the "Program licenses" window check that the "License has one LICENSE line for each software" setting is ON.

License server address: Elitebook Port number: 5053

License has one LICENSE line for each software

Show license enabled modules

Starting the version 14.0, DeskArtes Expert Series programs (like 3Data Expert) use as default the network license files, where each software has only one LICENSE line.

```

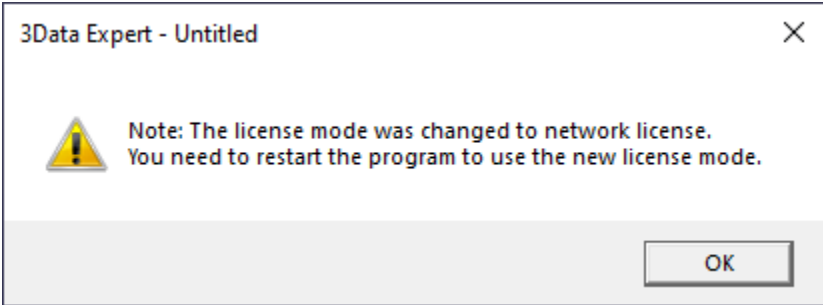
HOST Elitebook 80ce62983bf3 5053
ISV deskartes deskartes
LICENSE deskartes 3data_expert 14.0 31-dec-2022 1
options=0257d48040000c00 _ck=fdd6819a67 sig="60P04518PK8J0GWQBXSUHW
RA595CJB9XQJXESJR22HBR8WF0Q9TKUARK36BKJXA7QPQ6668VC0"

```

If you know that you have installed to license server an old type license file, where each software module has its own LICENSE line, then turn the "License has one LICENSE line for each software" setting OFF.

```
HOST Elitebook 80ce62983bf3 5053
ISV deskartes deskartes
LICENSE deskartes 3de_clitool 14.0 31-dec-2022 1 _ck=8ad6fc035f sig="6
0P0451D0S8YW0EH0YNEUB4M67B5A6YH22EQ9X822HYJKNSBR4QW3YUGUP67R23DKUEW
80TC3V"
LICENSE deskartes 3de_stlcut 14.0 31-dec-2022 1 _ck=33d6fcb9e0 sig="60
Q04580K7FVRCFHDTU4S77MV9WH56QEFSSM3M7B08AG1EP5QCCKN5UGV55A1QGWCUI0F
7WYEW2EV"
LICENSE deskartes 3de_stlredu 14.0 31-dec-2022 1 _ck=97d6fcdc9a sig="60
0PG451K9M7K8VSKMMX6G53E0DUN4YAHJ759B7022M0BNJHE45KSMQ926J7B0U3K6CHV
MA12SSS0"
LICENSE deskartes 3de_tr2slice 14.0 31-dec-2022 1 _ck=bcd6fc5dc1 sig="
60P0450N0JD8VHWKKB1D4RS6R6SF1045KCX1Q0022HURB1PWVTRBQN8VVGK4N49B647R
5P3YCG0"
```

After the right setting has been selected, press "OK" in "Program licenses" window.



Then the program reminds you to restart the program. Exit the 3Data Expert and start it again. In the startup the software will request a license from the license server.