

# **Network license setup**

Client settings



## **Index**

|   |          |
|---|----------|
| <i>DeskArtes Expert Series 12.1</i> .....                         | <i>1</i> |
| <i>About this document</i> .....                                  | <i>3</i> |
| <i>Requirements</i> .....   | <i>3</i> |
| <i>Terminology</i> .....  | <i>4</i> |
| <i>Network license client configuration in 3Data Expert</i> ..... | <i>5</i> |

## **About this document**

---

This document explains the client side settings needed to configure the DeskArtes Expert Series programs to use the Reprise License Manager (RLM) floating network license system, instead of the default DeskArtes standalone licenses.

Before changing the client side settings you need to have a license server running in one of the machines in your network.

For the instructions for installing the license server, see the document “**Network license setup: Server installation**”.

The instructions in this document are written for the DeskArtes Expert Series version 12.1 installation packages, containing Reprise RLM version 12.0 BL2 license server and tools.

The document is written using the 3Data Expert 12.1 as an example, but the same instructions can be applied also for the other DeskArtes Expert Series programs: 3Data Expert Lite, Dimensions Expert, Sim Expert and View Expert.

## **Requirements**

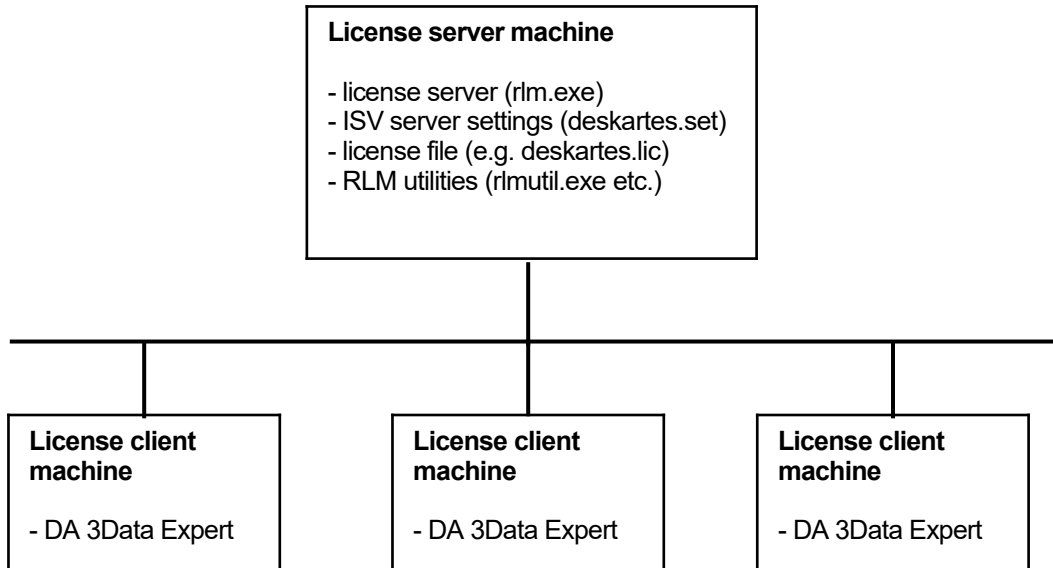
---

The machines running the DeskArtes Expert Series programs with the Reprise RLM network license system have to be connected to the machine running the license server with a network using the TCP/IP protocol.

## Terminology

---

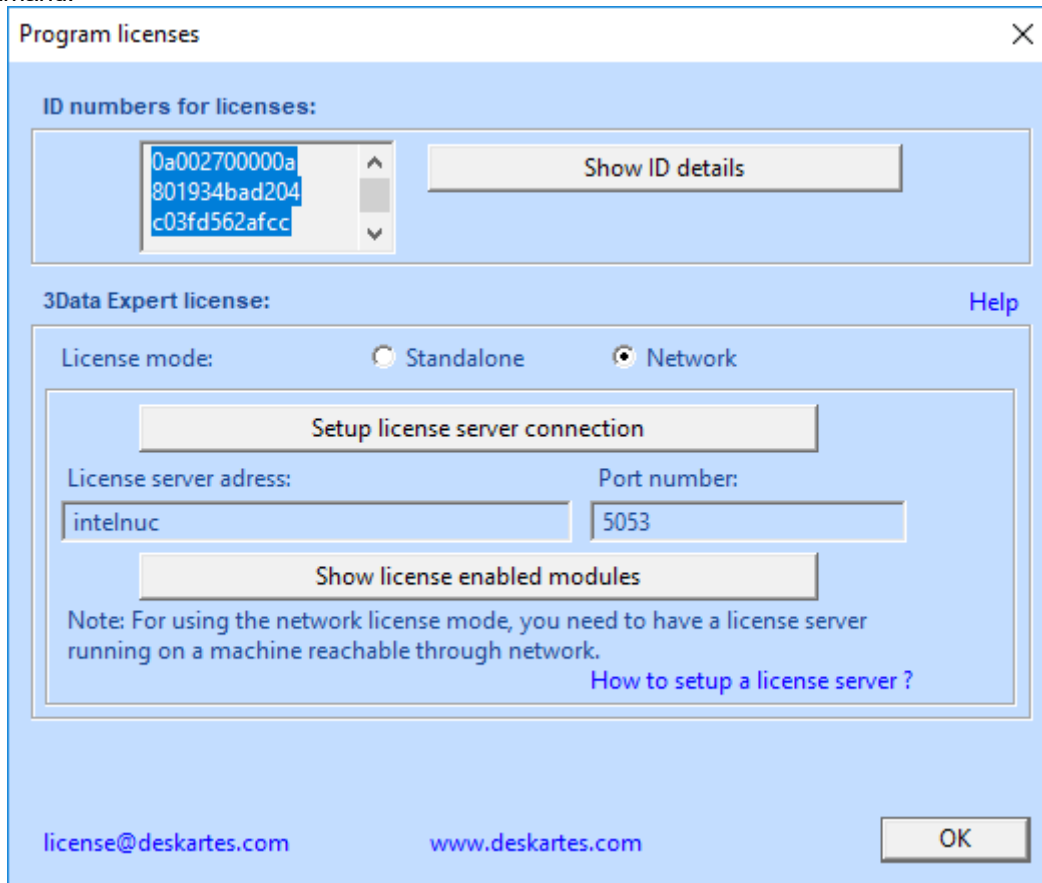
The Reprise RLM network license system, configured for DeskArtes 3Data Expert, consists of the parts illustrated in the following figure.



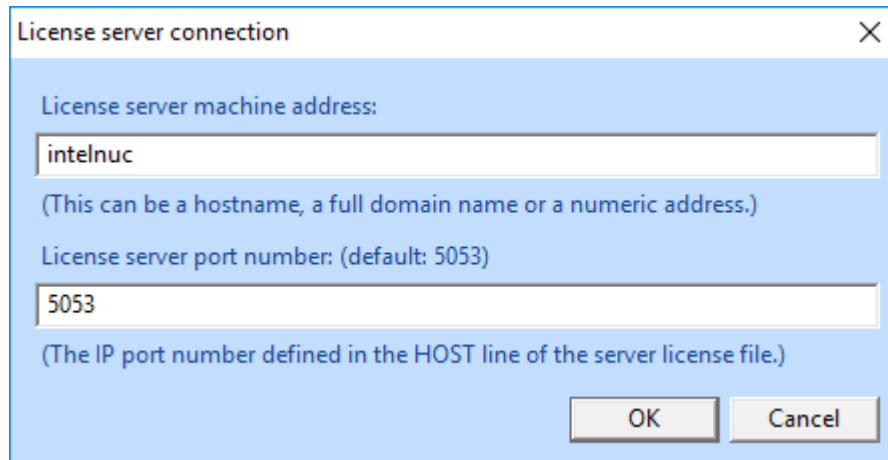
|                          |  |
|--------------------------|--|
| License server machine   | The machine where the license server is running.   |
| License client machine   | A machine where DeskArtes 3Data Expert is running.   |
| License server program   | The program (rlm.exe) controlling the license usage in the network, with help of the ISV server.   |
| ISV server settings file | A platform independent settings file for an ISV server (deskartes.set for DeskArtes programs, like 3Data Expert).                              |
| License file             | A text file containing the list of available licenses and ISV servers.   |
| RLM utilities            | A set of small command line utility programs for handling the license server (rlmutil.exe, rlmhostid.exe, rlmstat.exe, rlmshutdown.exe, etc.). |

## Network license client configuration in 3Data Expert

The license system settings can be changed in 3Data Expert by selecting the “Help->Licenses...” menu command.



In the Licenses dialog select the “Network” license type and press the “Setup license server connection” button.



Fill in the “License server machine address” and “License server port number”.

"**License server machine address** is a network address for the machine where the license server program is running. It can be a simple hostname, a full domain name or a numeric address (for example: licserver, licserver.somedomain.com or 192.168.0.105)"

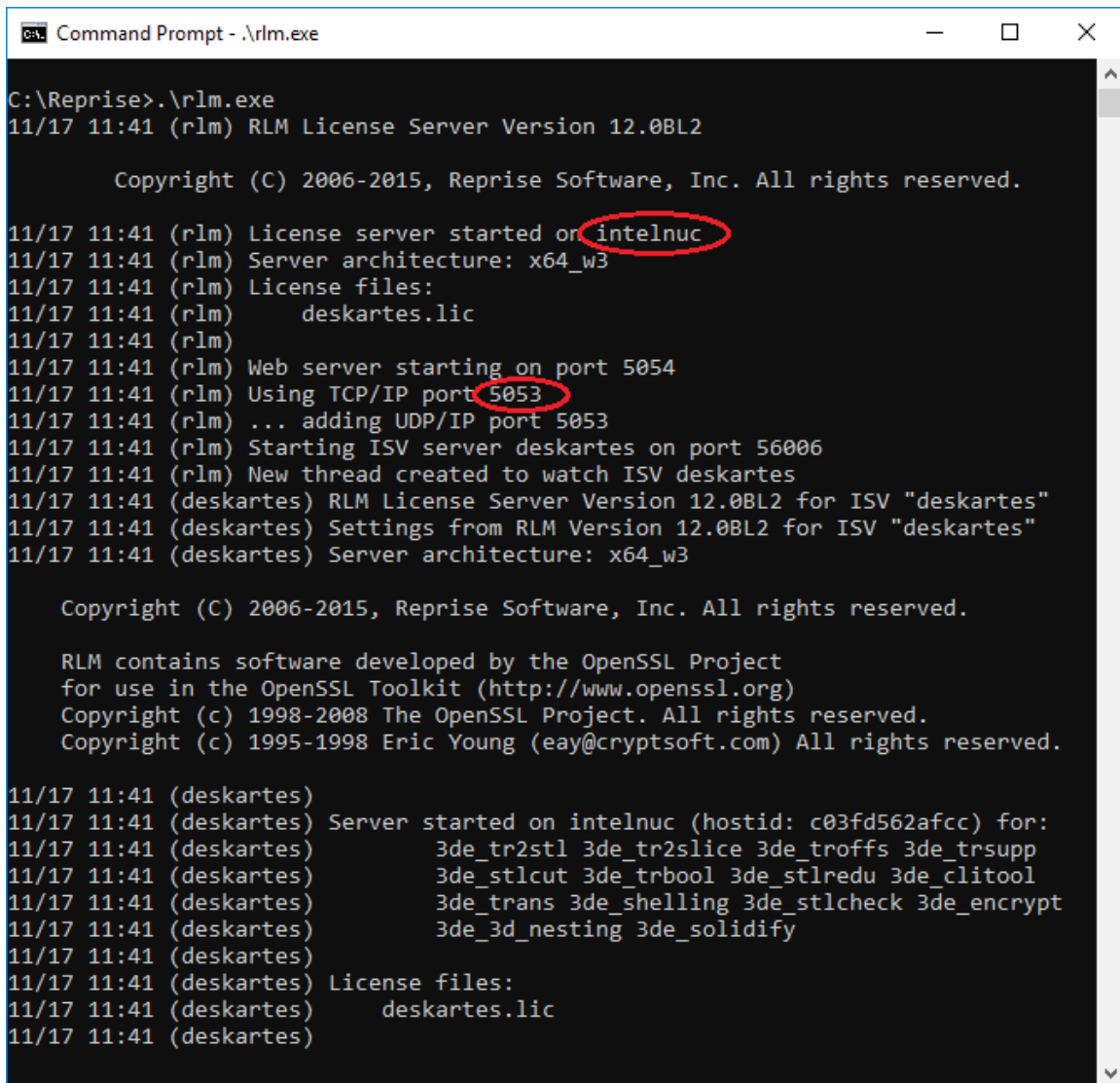
"**License server port number** is the IP port number used by the license server to listen license requests from client machines. The port number is defined in the HOST line of the license file. The default port number is 5053."

The correct port number and the hostname can be checked from the HOST line of the license file (second and fourth field)



```
deskartes.lic - Notepad
File Edit Format View Help
HOST intelnuc c03fd562afcc 5053
ISV deskartes deskartes
LICENSE deskartes 3de_clitool 12.1 31-dec-2020 1 _ck=86d6fccf9a sig="6
0P0453S0407HJ1QWUN37DU25614BBVFJ7J9XPR22H620NVC4DEUR7HP0RVQPKH2VXQH
AJA8TC"
LICENSE deskartes 3de_stlcut 12.1 31-dec-2020 1 _ck=2fd6fc1662 sig="60
PG450MK7VTFKM7N6VT2UCUYFH7JGTME5BXKWR22M08Y9VHK5X14XY0UM28MU4MF1XPT
Y4Y0STG"
LICENSE deskartes 3de_stlredu 12.1 31-dec-2020 1 _ck=93d6fc4235 sig="6
0P045067H1X2RAGPYCK6CJQTKVE65V48CWB9R022GUR0DCWCYQTK457J5WYR22PA525
8664H4"
LICENSE deskartes 3de_tr2slice 12.1 31-dec-2020 1 _ck=b8d6fc1967 sig="
60PG4539F0WJC82FF78PCNUPM9USGP26U9EP8P022M0AP209UW3HG9HF8QDEBRER6B9
PTE9A7H80"
LICENSE deskartes 3de_tr2stl 12.1 31-dec-2020 1 _ck=fbd6fc2dc1 sig="60
Q04580H4GVDBXJB6P3RJBB43X9FKM2RAQA95508AG17WQ50SE1QQ5ASYVX7K97MXXU
MB6K4TYJ"
LICENSE deskartes 3de_trbool 12.1 31-dec-2020 1 _ck=22d6fcdb8d sig="60
Q04580P42EQQF3QY9TK6JMCKSJ5BJ9A6VTD1C408AG1CNWCCNTC1U8SF6F533VA1EC5
GSR97EPT"
LICENSE deskartes 3de_troffs 12.1 31-dec-2020 1 _ck=24d6fc9234 sig="60
PG4580H1WJ4X3JUUVWVK90XQ6KJ52NEF5A8PNK08A72EP9JMTNX55QNBDM7QYTYCH34
YSFH3SG"
LICENSE deskartes 3de_trsupp 12.1 31-dec-2020 1 _ck=3ed6fc4e94 sig="60
P0451N4PR6GD4F7MBWEGR9XGTEXSNDV42CRPR22GEKNCEMYG4S3SEYQX5UD2ETYJSBJ
WASXC"
LICENSE deskartes 3de_shelling 12.1 31-dec-2020 1 _ck=e6d6fcdcc5 sig="
60PG4580GBDTFWGB41RWGC1X6PDSDFUXK2H1M5A08A0B7N9SD839BCVAPCYDN63M53
QA4QKBMA0"
LICENSE deskartes 3de_stlcheck 12.1 31-dec-2020 1 _ck=e1d6fc3f92 sig="
60PG4512CVW573CS74FB200AVKBVBV19PAB43MG22M09KJA2ES1TMVPDMFD624N57UT
2090HT2M0"
LICENSE deskartes 3de_encrypt 12.1 31-dec-2020 1 _ck=95d6fc943e sig="6
0NG452S55C6Q3U12SN3C75M8WPWPGFTVRFTUFG22D4TPG1M5MQVU4D8KRFW9XQJWX6E
KNHM"
Ln 37, Col 70 100% Windows (CRLF) UTF-8
```

or in the license server startup messages (lines: "License server started on ..." and "Using TCP/IP port ...").



```
Command Prompt - .\rlm.exe
C:\Reprise>.\rlm.exe
11/17 11:41 (rlm) RLM License Server Version 12.0BL2

    Copyright (C) 2006-2015, Reprise Software, Inc. All rights reserved.

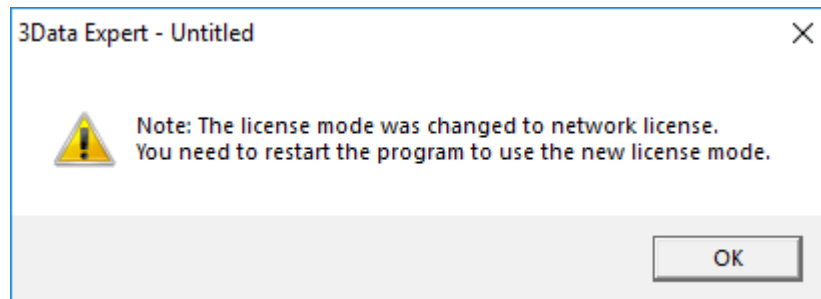
11/17 11:41 (rlm) License server started on intelnuc
11/17 11:41 (rlm) Server architecture: x64_w3
11/17 11:41 (rlm) License files:
11/17 11:41 (rlm)     deskartes.lic
11/17 11:41 (rlm)
11/17 11:41 (rlm) Web server starting on port 5054
11/17 11:41 (rlm) Using TCP/IP port 5053
11/17 11:41 (rlm) ... adding UDP/IP port 5053
11/17 11:41 (rlm) Starting ISV server deskartes on port 56006
11/17 11:41 (rlm) New thread created to watch ISV deskartes
11/17 11:41 (deskartes) RLM License Server Version 12.0BL2 for ISV "deskartes"
11/17 11:41 (deskartes) Settings from RLM Version 12.0BL2 for ISV "deskartes"
11/17 11:41 (deskartes) Server architecture: x64_w3

    Copyright (C) 2006-2015, Reprise Software, Inc. All rights reserved.

    RLM contains software developed by the OpenSSL Project
    for use in the OpenSSL Toolkit (http://www.openssl.org)
    Copyright (c) 1998-2008 The OpenSSL Project. All rights reserved.
    Copyright (c) 1995-1998 Eric Young (eay@cryptsoft.com) All rights reserved.

11/17 11:41 (deskartes)
11/17 11:41 (deskartes) Server started on intelnuc (hostid: c03fd562afcc) for:
11/17 11:41 (deskartes)     3de_tr2stl 3de_tr2slice 3de_troffs 3de_trsupp
11/17 11:41 (deskartes)     3de_stlcut 3de_trbool 3de_stlredu 3de_clitool
11/17 11:41 (deskartes)     3de_trans 3de_shelling 3de_stlcheck 3de_encrypt
11/17 11:41 (deskartes)     3de_3d_nesting 3de_solidify
11/17 11:41 (deskartes)
11/17 11:41 (deskartes) License files:
11/17 11:41 (deskartes)     deskartes.lic
11/17 11:41 (deskartes)
```

Press "OK" in "License server connection" window.



When the program reminds you about need to restart the program, exit the 3Data Expert and start it again.