

Network license setup

Client settings



Index

<i>DeskArtes Expert Series 12.0</i>	<i>1</i>
<i>About this document</i>	<i>3</i>
<i>Requirements</i>	<i>3</i>
<i>Terminology</i>	<i>4</i>
<i>Network license client configuration in 3Data Expert</i>	<i>5</i>

About this document

This document explains the client side settings needed to configure the DeskArtes Expert Series programs to use the Reprise License Manager (RLM) floating network license system, instead of the default DeskArtes standalone licenses.

Before changing the client side settings you need to have a license server running in one of the machines in your network.

For the instructions for installing the license server, see the document “**Network license setup: Server installation**”.

The instructions in this document are written for the DeskArtes Expert Series version 12.0 installation packages, containing Reprise RLM version 12.0 BL2 license server and tools.

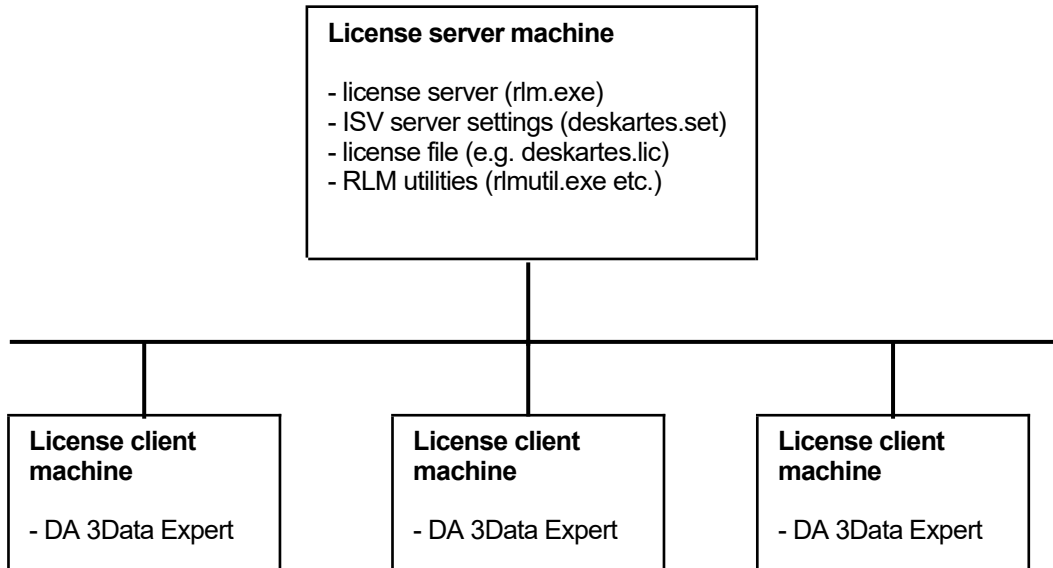
The document is written using the 3Data Expert 12.0 as an example, but the same instructions can be applied also for the other DeskArtes Expert Series programs: 3Data Expert Lite, Dimensions Expert, Sim Expert and View Expert.

Requirements

The machines running the DeskArtes Expert Series programs with the Reprise RLM network license system have to be connected to the machine running the license server with a network using the TCP/IP protocol.

Terminology

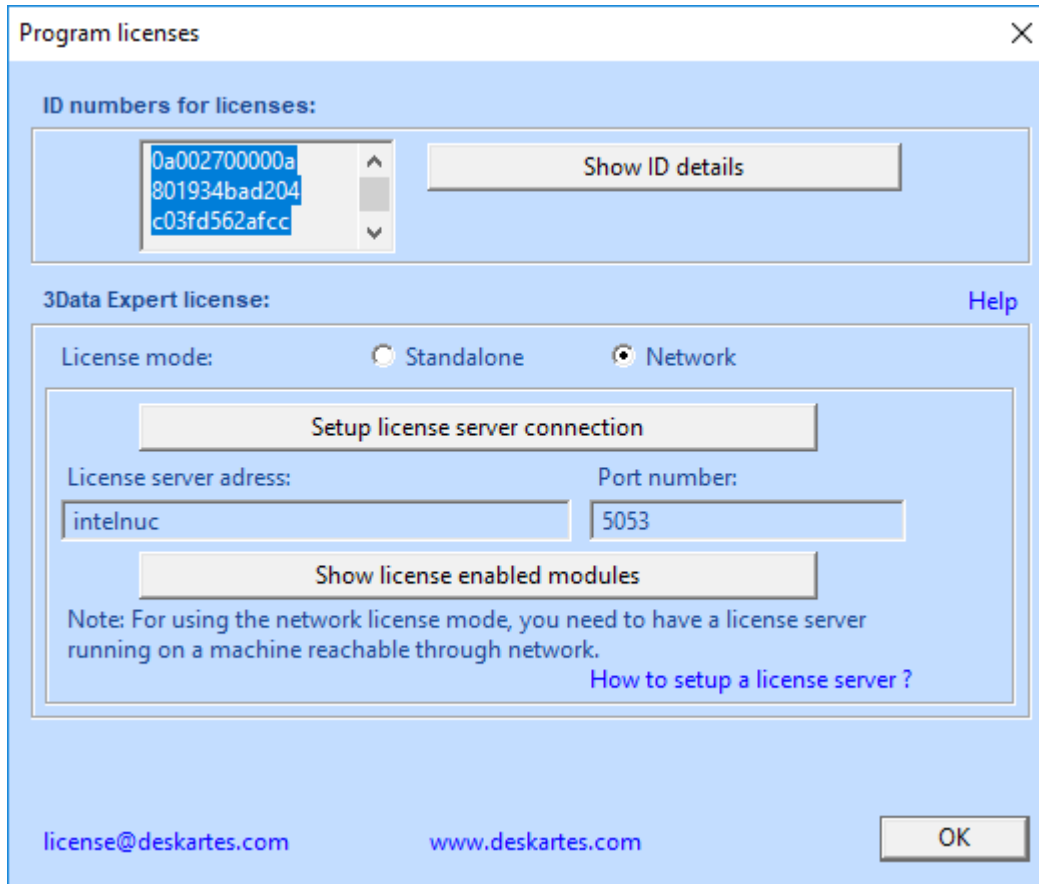
The Reprise RLM network license system, configured for DeskArtes 3Data Expert, consists of the parts illustrated in the following figure.



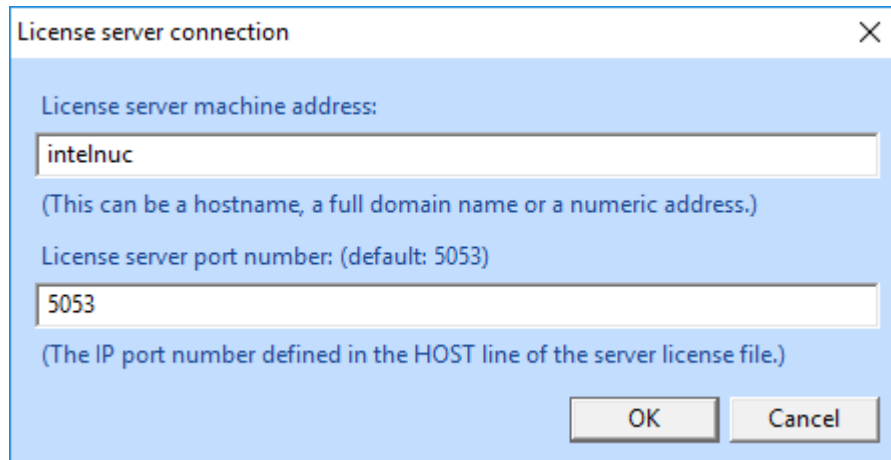
License server machine	The machine where the license server is running.
License client machine	A machine where DeskArtes 3Data Expert is running.
License server program	The program (rlm.exe) controlling the license usage in the network, with help of the ISV server.
ISV server settings file	A platform independent settings file for an ISV server (deskartes.set for DeskArtes programs, like 3Data Expert).
License file	A text file containing the list of available licenses and ISV servers.
RLM utilities	A set of small command line utility programs for handling the license server (rlmutil.exe, rlmhostid.exe, rlmstat.exe, rlmdown.exe, etc.).

Network license client configuration in 3Data Expert

The license system settings can be changed in 3Data Expert by selecting the “Help->Licenses...” menu command.



In the Licenses dialog select the “Network” license type and press the “Setup license server connection” button.



Fill in the “License server machine address” and “License server port number”.

"**License server machine address** is a network address for the machine where the license server program is running. It can be a simple hostname, a full domain name or a numeric address (for example: licserver, licserver.somedomain.com or 192.168.0.105)"

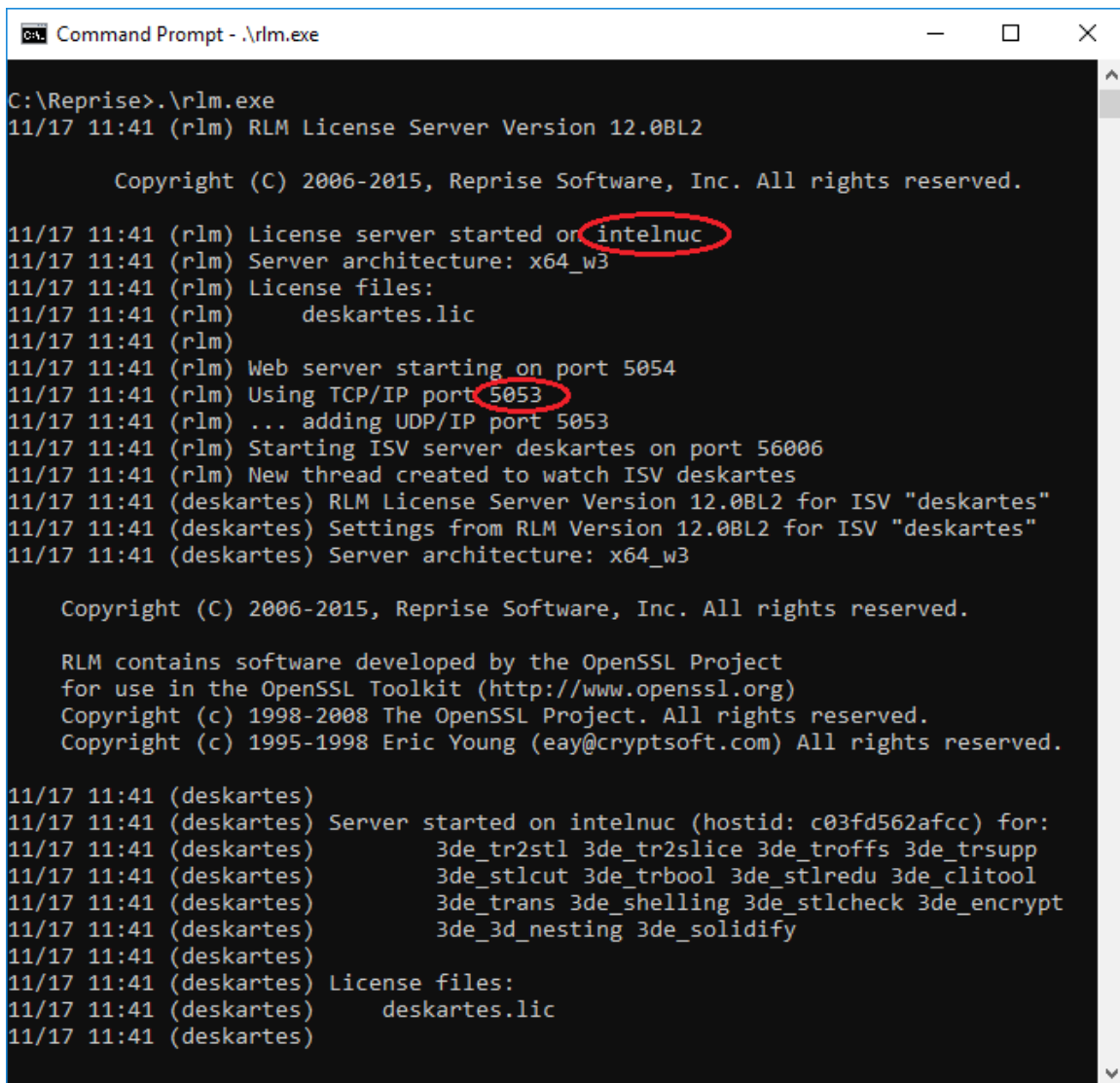
"**License server port number** is the IP port number used by the license server to listen license requests from client machines. The port number is defined in the HOST line of the license file. The default port number is 5053."

The correct port number and the hostname can be checked from the HOST line of the license file (second and fourth field)



```
deskartes.lic - Notepad
File Edit Format View Help
HOST intelnuc c03fd562afcc 5053
ISV deskartes deskartes
LICENSE deskartes 3de_tr2stl 12.0 31-dec-2200 1 _ck=fcd6fc969b sig="60
PG453DSUNTTQQSBJ1F5X2R63SQB9KXVQ3ED0022M08B1TJHYE10UDE72SPYSP145Y080
WX4EJ0"
LICENSE deskartes 3de_tr2slice 12.0 31-dec-2200 1 _ck=b9d6fc7267 sig="
60PG4580QC6U79NEYJY2SBXNJ80XTHJF6FS5C7Q108A0ABTYW22EKQ2QD31N8A0PC88B
D0EVBX40"
LICENSE deskartes 3de_troffs 12.0 31-dec-2200 1 _ck=25d6fc3431 sig="60
P0452HMEFS4A1JURBP9KS8BXH5QA95A0U9K2G22GN39S33HTHY3M5NH80MGVAA5J12W1
9YD4"
LICENSE deskartes 3de_trsupp 12.0 31-dec-2200 1 _ck=3fd6fcc897 sig="60
PG4580G7DVSQAJSC5MPR5TUTHXRE63YSURS0S08A674CYSQG1GT20G13P2CF32HGMRPF
SDQUHG"
LICENSE deskartes 3de_stlcut 12.0 31-dec-2200 1 _ck=30d6fc9a60 sig="60
P04501KWJG1YQQWG7EB78JYUT4NVPBJ2VWHF022HYCBMUVW05RFRBQ8KSMC2K43HU669
HF68"
LICENSE deskartes 3de_trbool 12.0 31-dec-2200 1 _ck=23d6fc4a5d sig="60
P0451Q3H6B33AGPJHCT604G0XWTD13N0DR5W822GD2D34A073PYKACPWUA3Q4Y8PVB8B
PEM8"
LICENSE deskartes 3de_stlredu 12.0 31-dec-2200 1 _ck=94d6fcbd96 sig="6
0P0453MK7FR11AUA338Q1SJUGXJHXR702A5VQG22G99VAA667PQJ0CE0GR23SQTMDTNH
W1DU4"
LICENSE deskartes 3de_clitool 12.0 31-dec-2200 1 _ck=87d6fcf36b sig="6
0PG4580H3EKAQU8UBHJH01PDPGVKFFHTCJBBHKW08A450EH542TVM76SJGFWHHCE5CGS
UT0DJ5G"
LICENSE deskartes 3de_trans 12.0 31-dec-2200 1 _ck=b9d6fc4b94 sig="60P
G4534W69PYD4M5AU933FHCQ4B06SED1B62DR22M0B1QNRB006MKTXH31EDAMRKRE9KHU
QUAE0"
LICENSE deskartes 3de_shelling 12.0 31-dec-2200 1 _ck=e7d6fc1666 sig="
60PG452W1CP82810RYJ8YUJ5TQKHMMGKTFB944022M0A0692TPGKHJGMGEKJDK6V4V7X
K9JVWEJG"
LICENSE deskartes 3de_stlcheck 12.0 31-dec-2200 1 _ck=e2d6fc5968 sig="
60PG4580G80X3HH5NXCKWVFBUK9KTVH0QGBJUQY08A3F0A09PJ5YQ9Q38VEHEG8WKPN
JKR1K630"
LICENSE deskartes 3de_encrypt 12.0 31-dec-2200 1 _ck=96d6fcfb9a sig="6
0P0453XBFWR8HWABKK0BWK01VTE5518JHN26T822GYH7TGQ1ABTMVK1K9MTV0SVK997H
FM4CV"
Ln 38, Col 9 100% Windows (CRLF) UTF-8
```

or in the license server startup messages (lines: "License server started on ..." and "Using TCP/IP port ...").



```
Command Prompt - .\rlm.exe

C:\Reprise>.\rlm.exe
11/17 11:41 (rlm) RLM License Server Version 12.0BL2

    Copyright (C) 2006-2015, Reprise Software, Inc. All rights reserved.

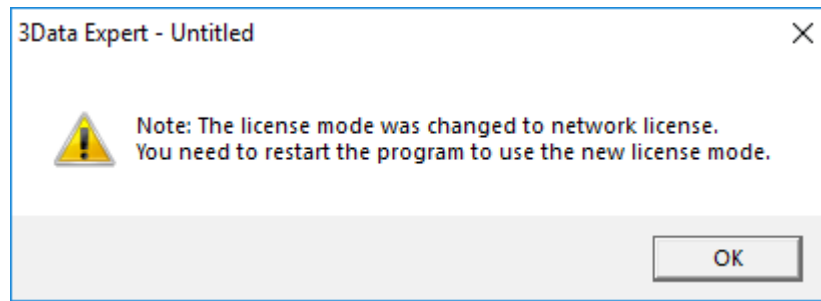
11/17 11:41 (rlm) License server started on intelnuc
11/17 11:41 (rlm) Server architecture: x64_w3
11/17 11:41 (rlm) License files:
11/17 11:41 (rlm)     deskartes.lic
11/17 11:41 (rlm)
11/17 11:41 (rlm) Web server starting on port 5054
11/17 11:41 (rlm) Using TCP/IP port 5053
11/17 11:41 (rlm) ... adding UDP/IP port 5053
11/17 11:41 (rlm) Starting ISV server deskartes on port 56006
11/17 11:41 (rlm) New thread created to watch ISV deskartes
11/17 11:41 (deskartes) RLM License Server Version 12.0BL2 for ISV "deskartes"
11/17 11:41 (deskartes) Settings from RLM Version 12.0BL2 for ISV "deskartes"
11/17 11:41 (deskartes) Server architecture: x64_w3

    Copyright (C) 2006-2015, Reprise Software, Inc. All rights reserved.

    RLM contains software developed by the OpenSSL Project
    for use in the OpenSSL Toolkit (http://www.openssl.org)
    Copyright (c) 1998-2008 The OpenSSL Project. All rights reserved.
    Copyright (c) 1995-1998 Eric Young (eay@cryptsoft.com) All rights reserved.

11/17 11:41 (deskartes)
11/17 11:41 (deskartes) Server started on intelnuc (hostid: c03fd562afcc) for:
11/17 11:41 (deskartes)     3de_tr2stl 3de_tr2slice 3de_troffs 3de_trsupp
11/17 11:41 (deskartes)     3de_stlcut 3de_trbool 3de_stlredu 3de_clitool
11/17 11:41 (deskartes)     3de_trans 3de_shelling 3de_stlcheck 3de_encrypt
11/17 11:41 (deskartes)     3de_3d_nesting 3de_solidify
11/17 11:41 (deskartes)
11/17 11:41 (deskartes) License files:
11/17 11:41 (deskartes)     deskartes.lic
11/17 11:41 (deskartes)
```

Press "OK" in "License server connection" window.



When the program reminds you about need to restart the program, exit the 3Data Expert and start it again.