

DeskArtes 3Data Expert 15.0

Network license setup

Client settings



Contents

- About this document..... 2
- Requirements..... 2
- Terminology 3
- Network license client configuration in 3Data Expert..... 4

About this document

This document explains the client license settings needed to configure the DeskArtes 3Data Expert program to use the Reprise License Manager (RLM) network license system, instead of the default DeskArtes standalone licenses.

Before changing the client license settings, you need to have a license server running in one of the machines in your network.

For the instructions for installing the license server, see the document "[Network license setup: Server installation](#)".

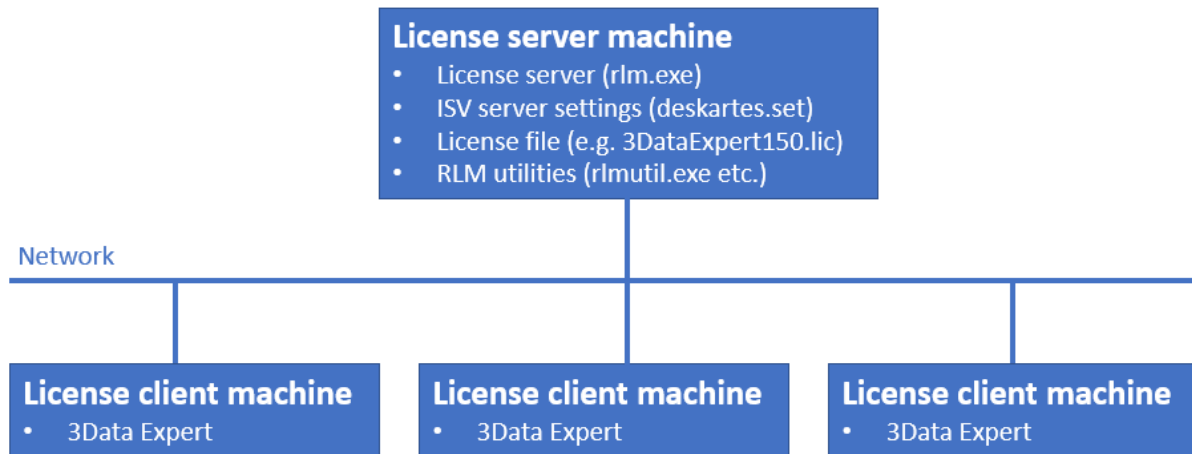
The instructions in this document are written for the DeskArtes 3Data Expert version 15.0 installation package, containing Reprise RLM version 14.2 BL5 license server and tools.

Requirements

The machines, running the DeskArtes 3Data Expert program with the Reprise RLM network license system, must be connected to the machine running the license server with a network using the TCP/IP protocol.

Terminology

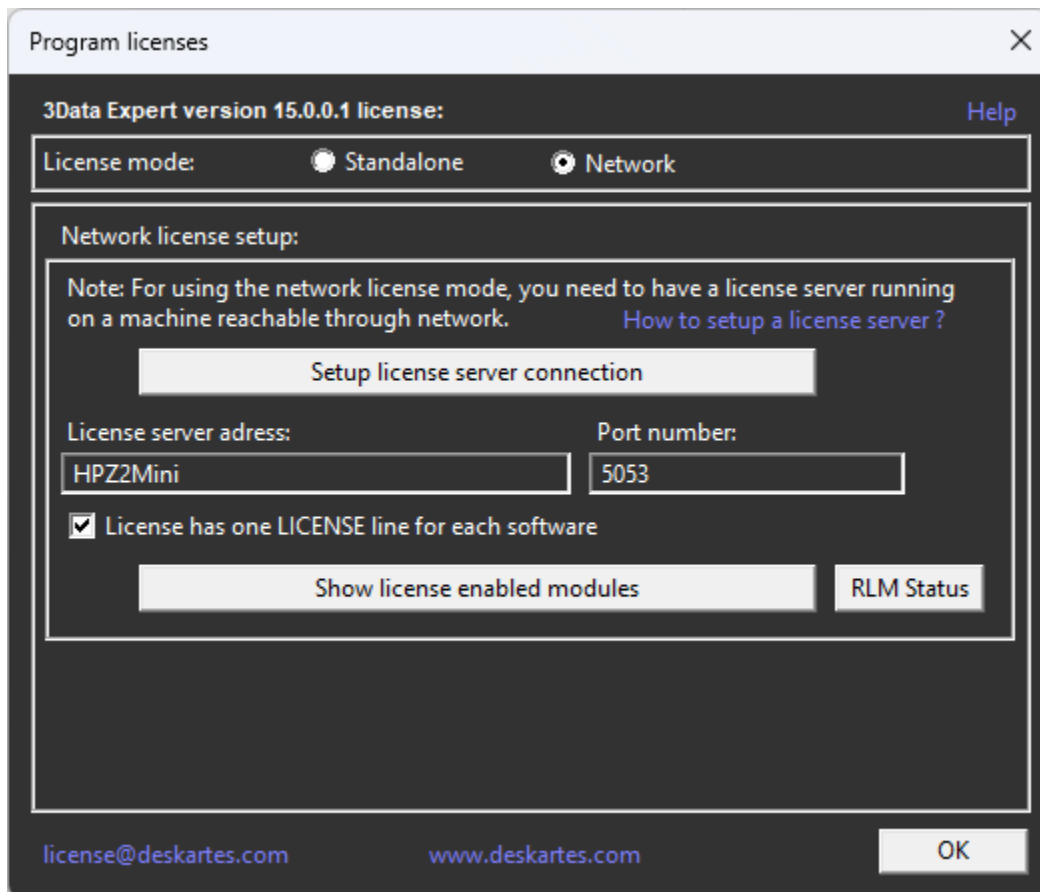
The Reprise RLM network license system, configured for DeskArtes 3Data Expert, consists of the parts illustrated in the following figure.



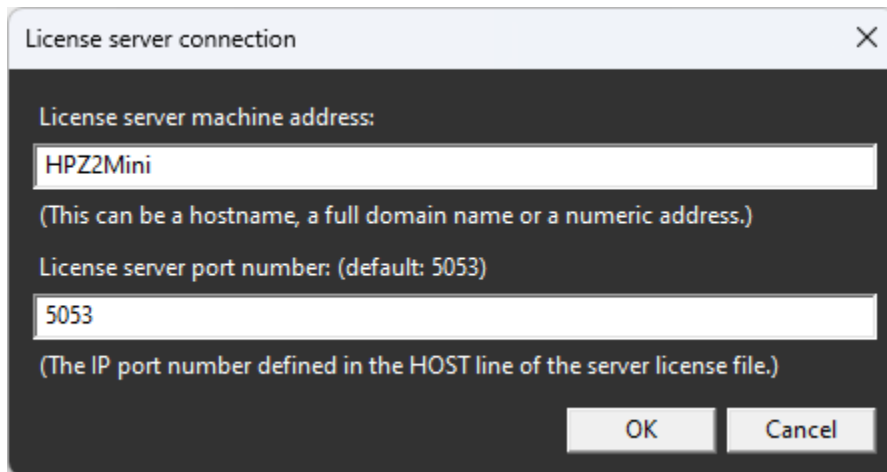
License server machine	The machine where the license server is running.
License client machine	A machine where DeskArtes 3Data Expert is running.
License server program	The program (rlm.exe) controlling the license usage in the network, with help of the ISV server.
ISV server settings file	A platform independent settings file for an ISV server (deskartes.set for DeskArtes programs, like 3Data Expert).
License file	A text file containing the list of available licenses and ISV servers.
RLM utilities	A set of small command line utility programs for handling the license server (rlmutil.exe, rlmhostid.exe, rlmstat.exe, rlmshutdown.exe, etc.).

Network license client configuration in 3Data Expert

The license system settings can be changed in 3Data Expert by selecting the "Help->Licenses..." menu command.



To set the software to use a network license select the "**Network**" license type and press the "**Setup license server connection**" button.



In the License server connection window fill in the "License server machine address" and "License server port number" fields.

License server machine address is a network address for the machine where the license server program is running. It can be a simple hostname, a full domain name or a numeric address (for example: licserver, licserver.somedomain.com or 192.168.0.105)

License server port number is the IP port number used by the license server to listen license requests from client machines. The port number is defined in the HOST line of the license file. The default port number is 5053.

The correct port number and the hostname can be checked from the HOST line of the license file (**second** and **fourth** field).

```
HOST HPZ2Mini c85acf785a53 5053
ISV deskartes deskartes
LICENSE deskartes 3data_expert 15.0 31-dec-2024 1
options=0257d4804000c00 _ck=00d68170ca sig="60PG4580NP60P5HQSSF9A
M8WPM906SD7RWQ3G8C08A44JBXAKPCDN2J8MFWYSSTXB8ST54U4UDG"
```

or in the license server startup messages (lines: "**License server started on ...**" and "**Using TCP/IP port ...**").

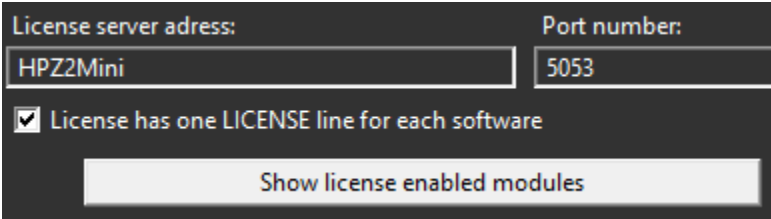
```
C:\Reprise>.\rlm.exe
04/21 09:28 (rlm) RLM License Server Version 14.2BL5

      Copyright (C) 2006-2021, Reprise Software, Inc. All rights reserved.

04/21 09:28 (rlm) License server started on HPZ2Mini
04/21 09:28 (rlm) Server architecture: x64_w4
04/21 09:28 (rlm) License files:
04/21 09:28 (rlm)      3DataExpert150.lic
04/21 09:28 (rlm)
04/21 09:28 (rlm) Web server starting on port 5054
04/21 09:28 (rlm) Using TCP/IP port 5053
04/21 09:28 (rlm) ... adding UDP/IP port 5053
04/21 09:28 (rlm) Starting ISV server deskartes on port 49909
04/21 09:28 (rlm) New thread created to watch ISV deskartes
```

When the correct information has been filled in, press "OK" in "License server connection" window.

In the "Program licenses" window check that the "License has one LICENSE line for each software" setting is ON.



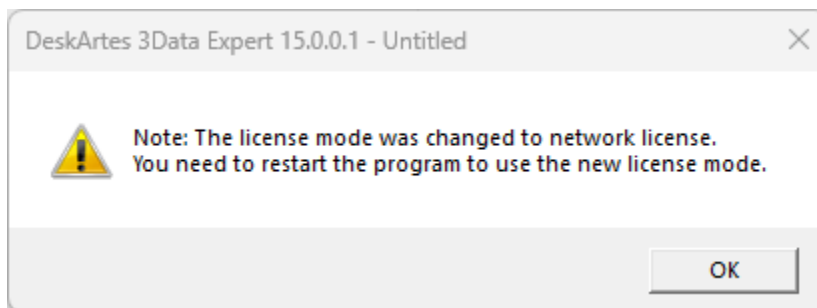
In version 15.0, DeskArtes 3Data Expert uses as default the network license files, where each software has only one LICENSE line.

```
HOST HPZ2Mini c85acf785a53 5053
ISV deskartes deskartes
LICENSE deskartes 3data_expert 15.0 31-dec-2024 1
  options=0257d48040000c00 _ck=00d68170ca sig="60PG4580NP60P5HQCSSF9A
  M8WPM906SD7RWQ3G8C08A44JBXAKPCDN2J8MFWYSSTXB8ST54U4UDG"
```

If you know that you have installed on the license server an old type license file, where each software module has its own LICENSE line, then turn the "License has one LICENSE line for each software" setting OFF.

```
HOST HPZ2Mini c85acf785a53 5053
ISV deskartes deskartes
LICENSE deskartes 3de_clitool 15.0 31-dec-2024 1 _ck=8dd6fc4a94 sig="6
0PG4580JYBRXKQNR8UP64MPGHTJAXM52BC8TVQ008A3DKB0VWGEVU2R56MD058U9MT7
TAP8M390"
LICENSE deskartes 3de_stlcut 15.0 31-dec-2024 1 _ck=36d6fc6537 sig="60
P0450BP2PSMJUEYK2T6CNPR3RE3GQ27YYJVPR22HH19934U2NGG5FV8F7HKTKFU050D
1TGWM"
LICENSE deskartes 3de_stlredu 15.0 31-dec-2024 1 _ck=9ad6fcedc6 sig="6
0PG453H77DCT4BEEP26GRXVDH8V5E7W5G7F5R22M08T68YP7XJJP2012UWRJ5K8J0V
XX25J39G"
LICENSE deskartes 3de_tr2slice 15.0 31-dec-2024 1 _ck=bfd6fcebf2 sig="
60P0453R3PPABDK35KW91P75YNTND1WSQ07GE1822HD63C3TXK3Y6JCNSRUGAV8CQF8
9A6VJU8"
```

After the right setting has been selected, press "OK" in "Program licenses" window.



Then the program reminds you to restart the program. Exit the 3Data Expert and start it again.

In the startup the software will request a license from the license server.